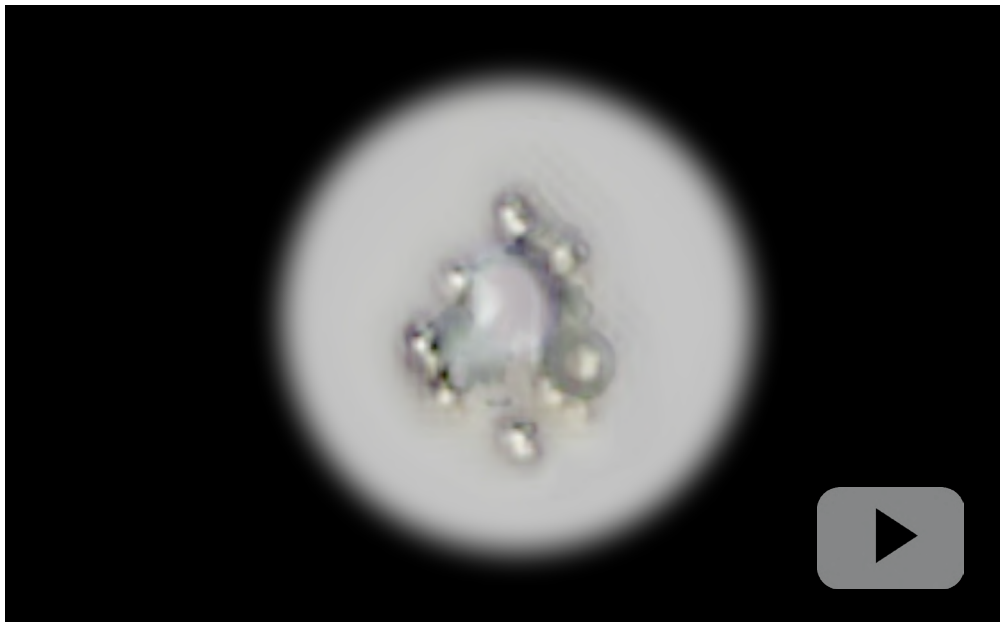


Exhibition Overview

Martin Dörr / Web: www.martindoerr.de / Mail: contact@martindoerr.de



Sleeping Radicle (Body without Narrator®)

Window Exhibition and Onboarding Event
Atelier Wäscherei, Offenbach, 23/11/25 - 21/12/25

Sleeping Radicle is a window installation and an analogue-digital access point. The exhibition presents an excerpt of Martin Dörr's long-term project *Body without Narrator®*, in which sleep becomes the driving force of a networked digital organism.

Visitors can generate and name their own *Sleep Seed*— a digital alter ego that becomes active only while they sleep. Registered sleepers, called *Cultivators*, collectively grow and influence a global, parasitic life-form animated entirely by real-time sleep.

The installation also shows the equipment of two *Cultivators* alongside their corresponding *Sleep Seeds*. During the exhibition period, the artist's own *Sleep Seed* inhabits the window space, continuously evolving in response to his nightly sleep patterns.

Cultivators are currently supported by Sleep as Android, Ylumi, Third of Life.
 The exhibition was supported by Kulturamt Offenbach a. M.

More about the project:
www.martindoerr.de/bodywithoutnarrator

right: **Sleep Gear <Nap_alone> (Hood)**, 2025
 Hooded sleeping outfit (Cultivator #3), weighted fabric,
 hand sewn, embroidered. © Studio Replica
 left: **Sleep Seed <Nap_alone>**, 2025
 Live Simulation Excerpt. © Martin Dörr



<Sleeping
®adicle>
Martin
Dörr

We need one kind of our
flexibility – a state where our
senses act on their own.
Sleeping Buddha (Body without
Senses) sees this state
as the driving force of a digital
universe, a network of
flow between
digital devices.

Window view – **Sleeping Radicle**, 2025
Atelier Wäscherei, Offenbach. © Studio Replica



left: Detail – **Sleep Seed <Nap_alone>**
 Realtime simulation on Singular Seed Screen
 Circular 5" IPS Display (color, sound), 3D printed case, biconvex glass lens
 © Studio Replica

right: Installation View– **Sleeping Radicle**, 2025
 with **Sleep Gear & Sleep Seed <Nap_alone>**, 2025
Tired Clock, 2025 and **Tired Ego**, 2025
 © Studio Replica





left: **Seed Station (Access Point)**, 2025

At the *Seed Station* located at the exhibition entrance, visitors can register in the *Body without Narrator* network, create and name their digital Sleep Seed/Alter Ego, and join the worldwide community of nocturnal *Cultivators*.

© Studio Replica

right: **Sleep Seed <zZzoff>** (on *Seed Screen*), 2025

Connected to and activated by the artist's real-time sleep during the exhibition period. © Studio Replica



Installation view – **Sleeping Radicle**, 2025, Atelier Wäscherei, Offenbach © Studio Replica



Window view - **Sleeping Radicle**, 2025, Atelier Wäscherei, Offenbach
Sleep Gear & Sleep Seed <ZZOff>, 2025. © Studio Replica



ALL TIRED
00:01
TIRED CLOCK
TIRED TIMES
TIRED PLAYER
TIRED TONGUE
TIRED HANDS
TIRED SUN
TIRED FEET
TIRED EYES
TIRED MOUTH
TIRED BACK
TIRED VISION
TIRED HEAD
TIRED RUN
TIRED SMILE
TIRED EGO
TIRED
ALL TIRED
00:00
TIRED CLOCK
TIRED TIMES
TIRED PLAYER
TIRED TONGUE
TIRED HANDS
TIRED SUN
TIRED FEET
TIRED EYES
00:00
TIRED MOUTH
TIRED BACK
TIRED VISION

left: Detail – **Tired Clock**, 2025

© Studio Replica

right: **Tired Ego**, 2025

Dimensions: 2 objects, each 3,5 × 5 × 2 cm

Steel, paper print

Tired Clock, 2025

Dimensions: 6 × 5 × 6 cm

Fabric tape, paper print © Studio Replica